

Figure 1. Gearcase Cover and Mounting Screw Locations

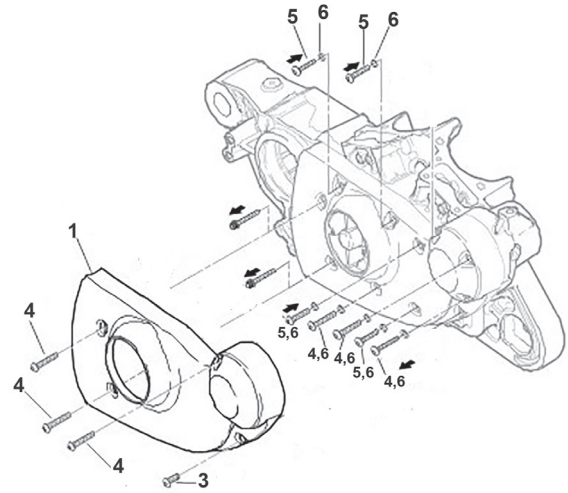


Figure 2. Parts: Cam Trim Cover

Table 1. Parts Table

- | | |
|---|---|
| 1 | Trim cover, gearcase (chrome) |
| | Gearcase cover hardware (includes items 3 through 6) |
| 3 | Hex Socket screw, socket head 1/4-20 x 1-5/16 inch long, (chrome) (1) |
| 4 | Hex Socket screw, socket head 1/4-20 x 2-3/8 inch long, (chrome) (6) |
| 5 | Hex Socket screw, socket head 1/4-20 x 1-3/4 inch long, (silver) (4) |
| 6 | Spacer (steel) (13) |

VT No. 42-0933 and 42-0357 TRIM COVER KIT

25231-04

Models

This kit fits 2004 and later XL model motorcycles.

Kit Contents

See Figure 2 and Table 1.

INSTALLATION

NOTE

DO NOT remove the socket-head cap screws from positions 1, 4, 5, 6 or 8 at this time. The remaining screws are being replaced with socket heads to allow the chrome trim to fit flush with the cover.

1. See Figure 1 and Figure 2. ONE AT A TIME, replace the original socket-head cap screws in locations 2, 3, 7, 9, 10, 11 on the gearcase with one of the chrome socket head screws (3,4,6) and a steel spacer (6) from the kit. As each screw is replaced, tighten the screw to 9–12.4 N·m (80–100 in-lbs).
2. After all of the above screws have been replaced and fully tightened, remove the five screws from locations 1,4, 5, 6, 8.
3. Obtain the chrome trim cover and remaining hardware from the kit.
4. Insert the chrome screw (5) and washer (7), from the outside, through the hole in location 4 on the chrome trim cover.
5. Insert the **longer** chrome screws (4), from the outside, through the holes in locations 1, 5, 6 and 8 on the chrome trim cover. Place a steel spacer on each screw. Insert screws (5) from outside through holes in locations 1 and 4. Place a steel spacer on each. Insert screws (5) from outside through holes in locations 1 and 4. A steel spacer on each.
6. **Models with forward foot controls:** Loosen the two screws retaining the right-side rider footpeg support to allow clearance to install the chrome trim cover. After the chrome trim has been positioned onto the gearcase cover, tighten the footpeg support screws to 61.1–67.9 N·m (45–50 ft-lbs).
7. **All models:** Thread one of the long chrome screws into the mating gearcase cover mounting hole for several threads, taking care not to cross-thread the screw in the hole.