

FRONT FAIRING ASSEMBLY KIT

Models

This kit contains direct replacement parts for original equipment (OE) outer front fairing components. Use this kit when installing an original or replacement outer fairing on 2014 and later FLHT/X (Electra Glide®, Street Glide® or Tri Glide®) models.

Installation Requirements

WARNING

The rider's safety depends upon the correct installation of this kit. Use the appropriate service manual procedures. If the procedure is not within your capabilities or you do not have the correct tools, have a Harley-Davidson dealer perform the installation. Improper installation of this kit could result in death or serious injury.

NOTE

This instruction sheet refers to service manual information. A service manual for this year/model vehicle is required for this installation.

Kit Contents

See Figure 1 and Table 1.

PREPARATION

WARNING

To prevent accidental vehicle start-up, which could cause death or serious injury, remove main fuse before proceeding. (00251b)

NOTE

- **Vehicles equipped with security siren:** With security fob present, turn ignition switch ON. After system is disarmed, turn ignition switch OFF. **IMMEDIATELY** remove the main fuse per the service manual.
- **Vehicles WITHOUT security siren:** See the service manual to remove the main fuse.

REMOVAL

If the outer fairing is installed now, refer to the service manual for specific information on the following generalized steps:

1. Remove the left and right forward lamp brackets.
2. Remove windshield.
3. Remove outer fairing.

FAIRING ASSEMBLY

NOTES

- *Make sure that ambient temperature is **at least** 60 °F (16 °C) for proper adhesion of the bezel and windshield tape to the fairing.*
- *Allow **AT LEAST** 24 hours after applying these items before exposing the area to vigorous washing, strong water spray or extreme weather.*
- *The adhesive bond will increase to maximum strength after about 72 hours at normal room temperature.*

Air Duct Bezel Installation

If a bezel is installed on the fairing now, see the service manual for removal steps:

1. See Figure 1. Test-fit the bezel (1) to the fairing before installation. Do not remove the protective tape from the three tape strips (A) until ready to apply the bezel.
2. Clean the bezel opening in the fairing with a mixture of 50 percent isopropyl alcohol and 50 percent distilled water. Allow to dry completely.
3. Remove the protective tape from the adhesive backing of three tape strips on the bezel. Carefully position the bezel to the fairing. Press firmly into place. Hold the bezel in position, with steady pressure on the areas over the tape strips, for about ten seconds.

Windshield Mounting Tape Installation

1. Remove any old windshield tape from the inner top surface of the outer fairing.
2. Clean with a mixture of 50 percent isopropyl alcohol and 50 percent distilled water. Allow to dry completely.
3. Remove the protective tape from the adhesive backing on the windshield tape (2). Carefully position the tape to the fairing, aligning the holes and alignment grooves. Smooth the tape firmly into place.

Clip Nut Installation

1. Install the clip nuts (3), with the threads forward as shown, over the four mounting pads on the inside of the outer fairing.

FAIRING INSTALLATION

Refer to the service manual for specific information on the following generalized steps:

- 1. Verify that seals between the outer and inner fairing are in place and undamaged.
- 2. Install outer fairing.
- 3. Install windshield.
- 4. Install the left and right forward lamp brackets.

SERVICE PARTS

Table 1. Service Parts

Item	Description (Quantity)	Part Number
1	Bezel, outer fairing air duct	29200007
2	Tape, windshield mounting	11100055
3	Clip nut (4)	7900
Items mentioned in text, but not included in kit.		
A	Tape, adhesive (3)	

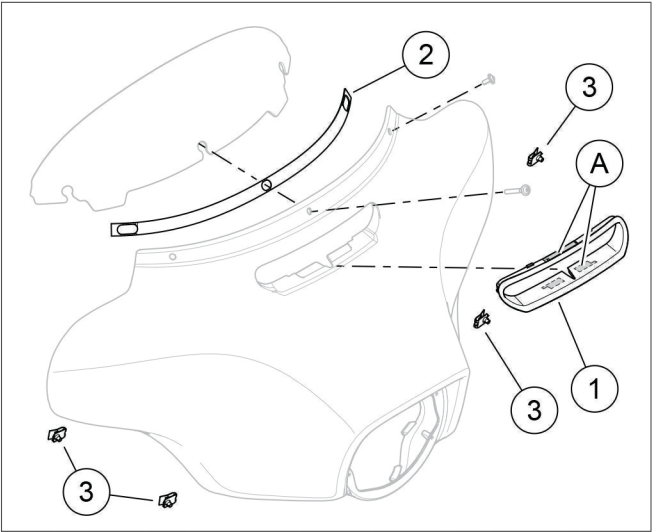


Figure 1. Service Parts, Front Fairing Assembly Kit