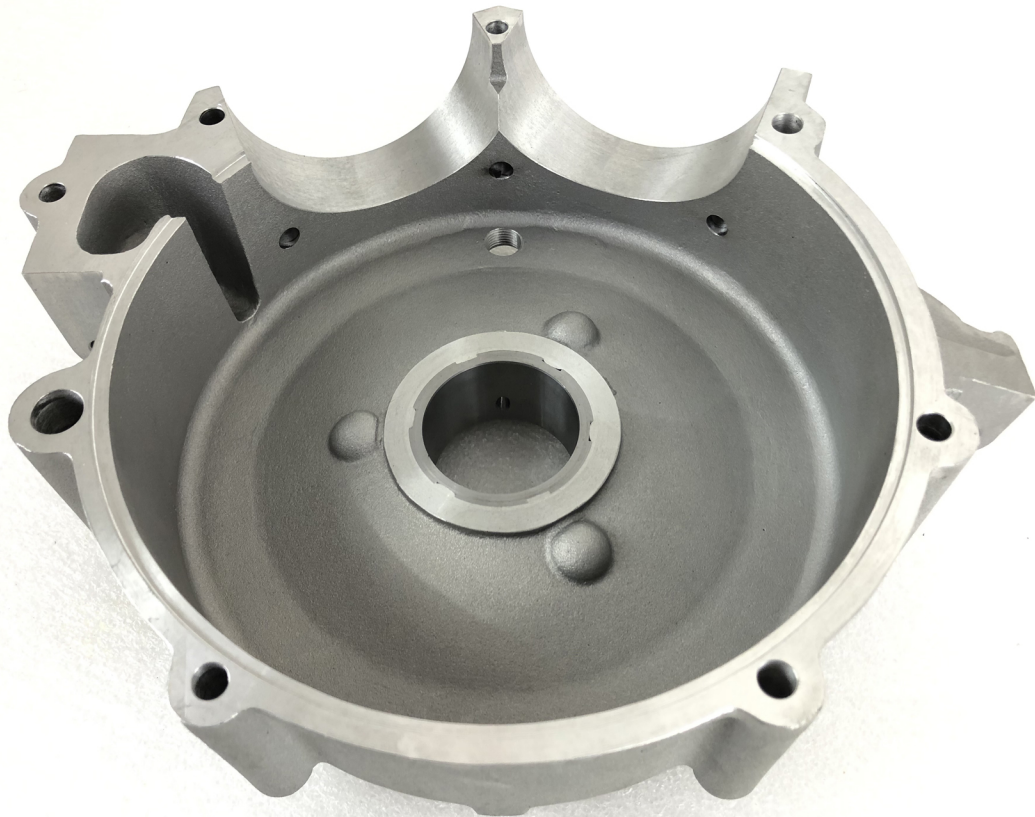




49-0946

NECESSARY FLYWHEEL CLEARANCE TO REPLACEMENT LEFT CASE ONLY



THE DEPTH OF THE FLYWHEEL SIDE MAY NEED TO BE INCREASED. MEASUREMENT FROM CENTER CRANKCASE JOINT SEEM DOWNWARD SHOULD REACH A DEPTH OF 2.400. AREA NEAREST THE OIL SCRAPER NEEDS THE MOST MATERIAL REMOVED.

CYLINDER BASE STUD HOLES ARE TOO SMALL. 3/8-16 THREAD AND NEED TO BE 7/16-14 THREAD.

