

# VT No. 54-0168 PROFILE REAR LOWERING KIT, CHROME COVERED STYLE

## Additional Parts Required

This kit requires the separate purchase of Belt Guard (P/N 60633-08) for 2007 model year.

### WARNING

The rider's safety depends upon the correct installation of this kit. If the procedure is not within your capabilities or you do not have the correct tools, have a dealer perform the installation. Improper installation of this kit could result in death or serious injury.

## REMOVAL

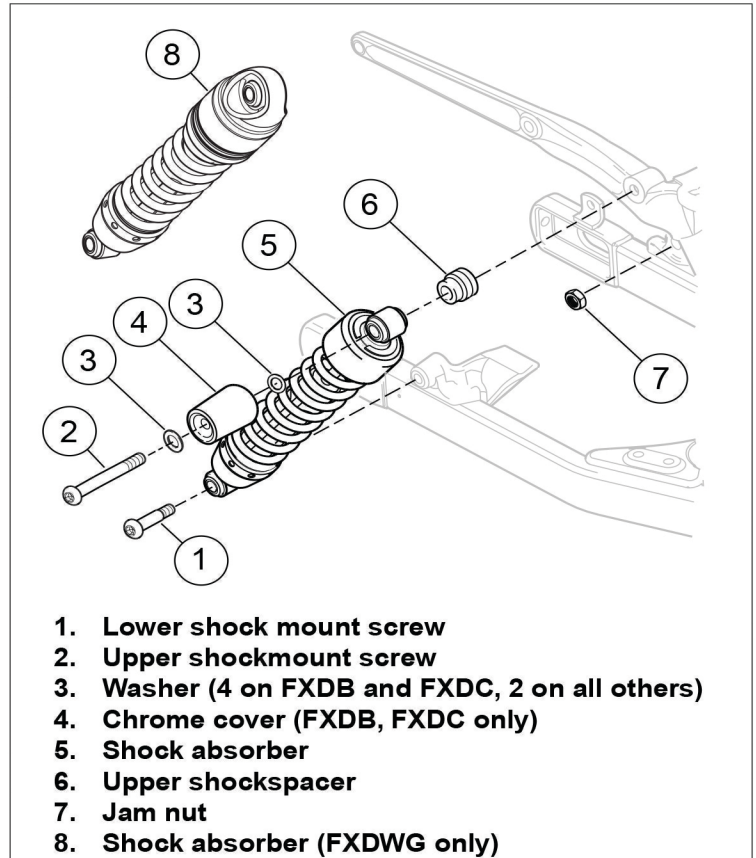
1. Place motorcycle on a center stand with rear wheel raised off the ground. Save designated hardware for installation of new shock absorbers.

### Shock Absorbers - 2007 Models

1. See Figure 1. Remove bottom shock mount screw (1) and jam nut (7) (only used on left side).
2. Remove upper shock mount screw (2), outer washer (3), chrome cover (4), inner washer (3), shock absorber (5) and spacer (6). Chrome covers and inner washers are only used on FXDB and FXDC models.
3. Discard chrome cover (4) and inner washers (3) if present.
4. Repeat for other shock absorber.

### Belt Guard - 2007 Models Only

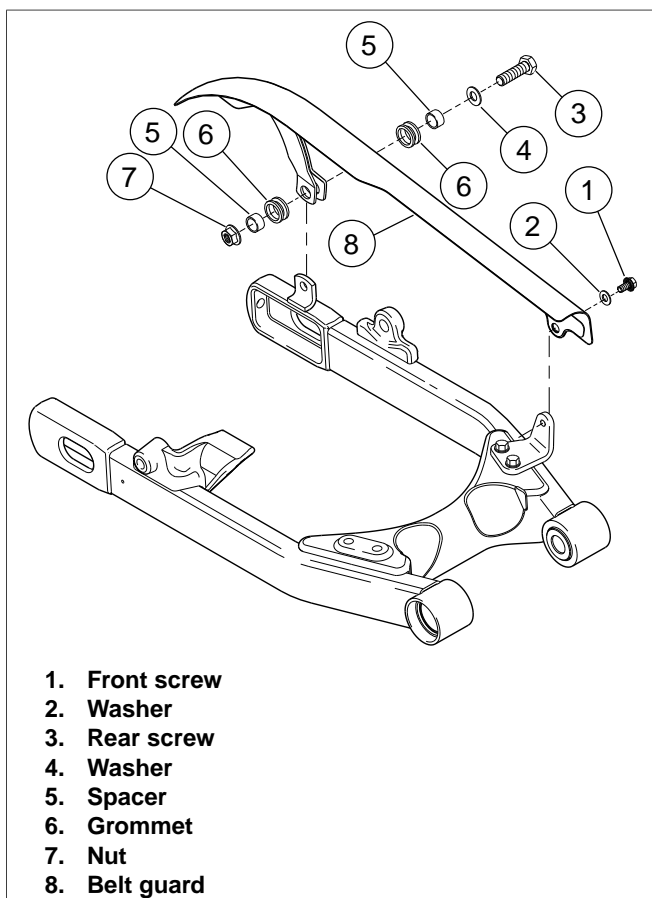
5. See Figure 2. Remove front fastener (1) and washer (2).
6. Remove rear fastener (3) and washer (4) from nut (7),
7. Lift belt guard (8) away from rear fork.
8. Disassemble belt guard by removing grommets (6) and spacers (5). Save hardware, grommets and spacers for installation of new Belt Guard Kit.



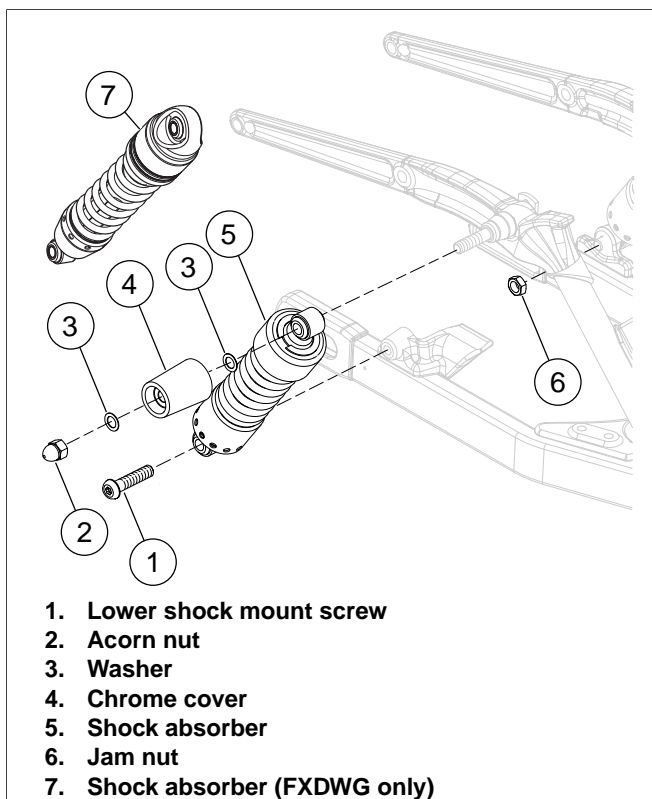
**Figure 1. Remove Stock Shock Absorber - 2007 Models**

### Shock Absorbers - 2008 Models

1. See Figure 3. Remove lower shock mount screw (1) and jam nut (6) (only on left side).
2. Remove acorn nut (2), outer washer (3), chrome cover (4), inner washer (3) and shock absorber (5). Chrome covers and inner washers are only used on FXDB and FXDC models.
3. Discard chrome cover (4) and inner washers (3) if present.
4. Repeat for other shock absorber.



**Figure 2. Belt Guard**



**Figure 3. Remove Stock Shock Absorber - 2008 Models**

## INSTALLATION

### Belt Guard - 2007 Models Only

1. See Figure 2. Install grommets (6) and spacers (5) on new belt guard.
2. Place assembled belt guard over front and rear tabs on rear fork.
3. Loosely install front fastener (1) and washer (2).
4. Loosely install rear fastener (3) and washer (4) with nut (7).
5. Tighten front and rear fasteners to 10-15 ft-lbs (13.6-20.3 Nm)
6. Verify that belt guard does not contact belt during rear fork travel.

### Shock Absorbers - 2007 Models

7. Clean old Loctite from threads of all shock absorber fasteners.
8. See Figure 1. Apply two to three drops of Loctite 243 (blue) to threads of right side upper shock mounting screw (2), then fasten new shock to frame using upper shock mounting screw, one outer washer (3), and upper shock spacer (6).
9. Repeat for opposite side.
10. Apply two to three drops of Loctite 243 (blue) to lower shock mounting screw (1) and install new shock to left side of swingarm using screw and jam nut (7).
11. Apply two to three drops of Loctite 243 (blue) to threads of lower shock mounting screw (1), then install new shock to right side of swingarm, threading screw into swingarm.
12. Tighten upper shock mounting screws to 75-85 ft-lbs (102-115 Nm).
13. Tighten lower shock mounting screws to 30-40 ft-lbs (41-54 Nm).

### Shock Absorbers - 2008 Models

1. Clean old Loctite from threads of all fasteners.
2. See Figure 3. Apply two to three drops of Loctite 243 (blue) to threads of right side upper shock mounting acorn nut (2), then fasten new shock to frame shock stud using one outer washer (3) and acorn nut. Repeat for opposite side.
3. Apply two to three drops of Loctite 243 (blue) to lower shock mounting screw (1) and install new shock to left side of swingarm using screw and jam nut (6). Raise or lower rear tire as necessary to ease installation.
4. Apply two to three drops of Loctite 243 (blue) to threads of lower shock mounting screw (1), then install new shock to right side of swingarm, threading screw into swingarm.
5. Tighten shock mounting screws and acorn nuts to 30-40 ft-lbs (41-54 Nm).